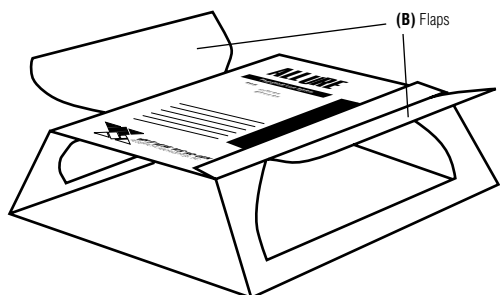


PRESCRIPTION TREATMENT® brand

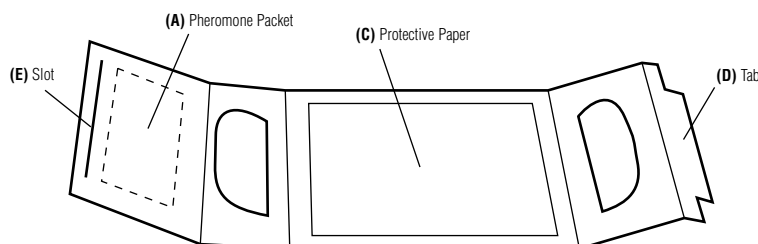
ALLURE®

PT® 6 Beetle Trap



ALLURE® PT® 6 Beetle Trap Assembly Instructions:

1. Fold trap on scored lines.
2. Peel off paper covering adhesive on back of pheromone packet. Avoid touching packet membrane surface with fingers. Place the pheromone packet (A) inside the unit on the top panel as shown below (non-glue side).
3. Loosen flaps (B) as in picture.
4. Remove protective paper (C) from bottom inside of trap (catch area).
5. Carefully insert tab (D) in slot (E) as shown.



Trap Placement and Use:

For monitoring, evenly space traps in a grid system. Use one trap per 30,000 cubic feet. Place traps on the floor or other surfaces accessible to beetles. Place traps at entrance points (dock doors, other doors, etc.) and outside to determine if beetles are coming in from outside. These traps can be secured to a variety of surfaces to hide them from the view of customers and effectively trap Red and Confused Flour Beetles. Record trap counts on the Whitmire Micro-Gen ALLURE® Monitoring Record form.

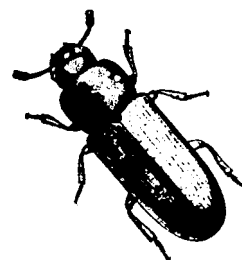
To find infestations within the facility, place more traps (use as many as one per 9,000 cubic feet) around traps that have higher captures. Close inspection in the area of maximum trap catch should reveal the infestation source.

Mass trapping can be accomplished with trap densities of one or more traps per 3,000 cubic feet, depending on the size of the beetle population. Inspect traps weekly and remove insects and debris. Replace trap if insects, dust, or debris reduce stickiness. The pheromone lure lasts 16 weeks and can be removed and used on new traps.

Note: To prolong storage life of the pheromone packet, refrigerate or freeze. Use tweezers or rubber gloves in handling to avoid contaminating packets when different ALLURE® products are being used. Do not damage the lure membrane by stapling, pinning or nailing the packet to the trap.

Red Flour Beetle Confused Flour Beetle

Tribolium castaneum Herbst
Tribolium confusum Jacquelin du Val



COMMODITIES ATTACKED:

Cereal and cereal products of all kinds: grains, flour, beans, dried fruits, nuts, chocolate, peppers, peas, oilseeds, rice, semolina and spices.

GEOGRAPHIC RANGE:

Worldwide

IDENTIFICATION:

Adult - Both species of insects are small, flat reddish-brown beetles about 1/7" long. Both are similar but the antenna of the confused flour beetle gradually enlarges to form a four-segmented club, whereas the antenna of the red flour beetle enlarges abruptly to form a three-segmented club. The adult confused flour beetle does not fly, where adult red flour beetles are strong fliers. Consult a local expert for proper identification.

Larvae - The two species are hard to distinguish, appearing as small worm-like larvae which grow to about 3/16" long. Larvae of both species have two forked projections at the end of the last body segment.

LURE DURATION:

16 weeks

RECOMMENDED TRAPS:

ALLURE® PT® 6 Beetle Trap
ALLURE® Covered Beetle Trap



WHITMIRE MICRO-GEN
RESEARCH LABORATORIES, INC.
800-777-8570